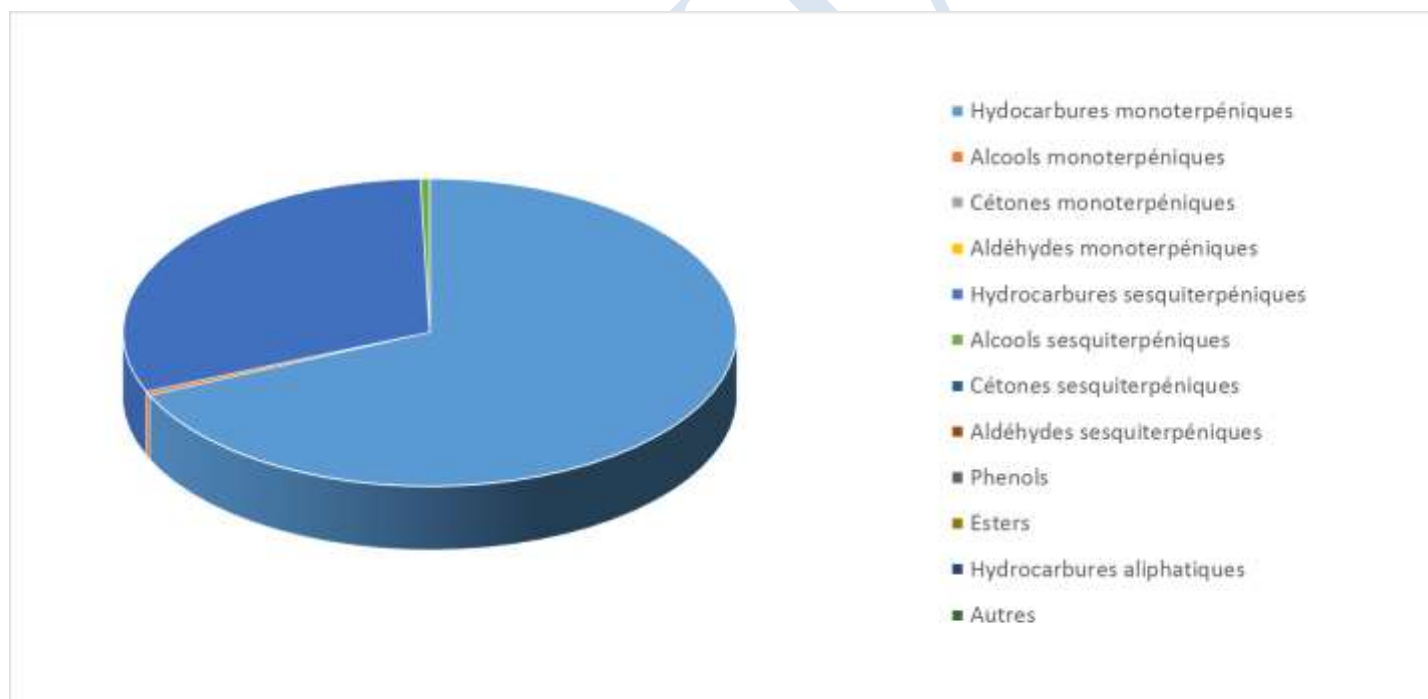


 FLORIHANA JE INTERNATIONAL	ENREGISTREMENT DES BULLETINS ANALYTIQUES : CHROMATOGRAPHIE ESSENTIAL OIL CHROMATOGRAPHY SHEET RECORDS	7-2-ENR-005 v3	Page 1 sur 3
		Date d'application : 01/01/2013	
		Date de révision : 15/04/2022	

Date : 22/03/2023
 Référence produit / Product reference : FLE122
 Huile essentielle de / Essential oil of : Poivre noir / Black pepper
 Numéro de lot / Lot Number : R210323MG
 Densité à 20°C (g/cm³) / Density to 20°C (g/cm³) : 0.867
 Indice de réfraction / Refractive index : 1.48
 Pouvoir rotatoire à 20°C / Optical rotation to 20°C : 5.54°
 Mode de culture / Culture mode : Cultivé / Cultivated
 Pays / Country : Madagascar
 Date de production / Production date : 01/2023
 D.L.U. / Shelf life : 02/2028
 Mode d'extraction / Extraction mode : Distillation à la vapeur / Steam distillation
 % Bio / % Organic : 100%
 Nom Latin / Latin Name : Piper nigrum L.
 Parties utilisées / Used Parts : Baies / Berry





Molécule	%
ALPHA-THUJENE	0.056
ALPHA-PINENE	15.867
BETA-PINENE	12.614
CAMPHENE	0.463
SABINENE	0.208
BETA-MYRCENE	2.430
PARA-MENTHA-1(7)8-DIENE	0.026
PARA-MENTHA-2,4(8)-DIENE	0.193
ALPHA-PHELLANDRENE	3.325
BETA-PHELLANDRENE	0.181
DELTA-3-CARENE	12.851
ALPHA-TERPINENE	0.040
GAMMA-TERPINENE	0.112
TERPINOLENE	0.604
TERPINENE-4-OL	0.019
ALPHA-TERPINEOL	0.160
PARA-CYMENE	0.204
LIMONENE *	18.439
1,8-CINEOLE (EUCALYPTOL)	0.066
CIS-BETA-OCIMENE	0.027
TRANS-BETA-OCIMENE	0.345
LINALOL *	0.233
CAMPBRE	0.019
BICYCLOELEMENE	0.188
DELTA-ELEMENE	3.710
CIS-BETA-ELEMENE	0.057
TRANS-BETA-ELEMENE	1.354
GAMMA-ELEMENE	0.117
ALPHA-CUBEBENE	0.071
CYCLOSATIVENE	0.443
ALPHA-COPAENE	0.175
BETA-MAALIENE	0.111
BETA-CARYOPHYLLENE	15.347
ALPHA-CARYOPHYLLENE	1.227
ALPHA-GUAIENE	0.321
TRANS-CADINA-1,(6)4-DIENE	0.083



GAMMA-GURJUNENE	0.033
GERMACRENE D	3.039
SELINA-3,7-DIENE	0.059
DELTA-SELINENE	0.056
BETA-SELINENE	2.073
ALPHA-SELINENE	1.492
7-EPI-ALPHA-SELINENE	0.059
ALPHA-MUUROLENE	0.067
TRANS-TRANS-ALPHA-FARNESENE	0.248
BETA-BISABOLENE	0.072
GAMMA-CADINENE	0.064
DELTA-CADINENE	0.205
TRANS-CADINA-1,4-DIENE	0.027
ELEMOL	0.023
GERMACRENE B	0.136
OXYDE DE CARYOPHYLLENE	0.128
ISOSPATHULENOL	0.172
EPI-ALPHA-MUUROLOL	0.034
KHUSIMOL	0.132
Total	99.805

- * = Substance(s) allergène(s) / allergen(s)
 ** = Substance(s) classée(s) CMR / Substance(s) classified as CMR

